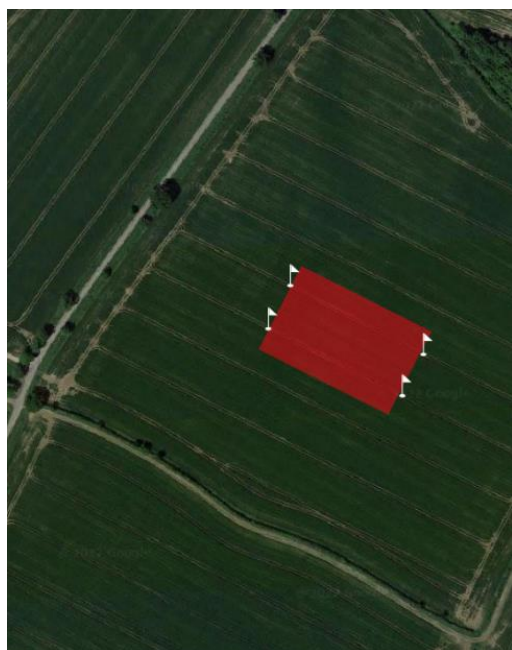


Patch tests for P and K

- With high grain prices, it's worth paying extra attention to optimising crop nutrition
- YEN Nutrition grain analysis data suggests many crops may be deficient in P, and some in K



Why not try a patch test to evaluate the effects of fresh soil P or K applications?



1. Choose a field with historically lower P or K indices
2. Keeping in mind the underlying variation across your field, choose an even area to locate your trial
3. Mark a patch – two tramlines wide and 60-100m long – with flags in the wheelings
4. Either apply soil P or K to this patch and not to the surrounding field, or apply to the surrounding field and miss this patch
5. Record the positions of the four flags, e.g. with a mobile app such as '[GPS coordinates](#)'
6. Photograph any visible differences between the patch and the surrounding crop; to look for effects, you can also use satellite imagery (e.g. www.datafarming.com.au)
7. Share your ideas and questions about your trial, and compare your results with other farmers' experiences in our Farm PEP '[Crop Nutrition Club](#)'

Farm PEP Trial Tool

ADAS are developing a 'Farm Trials Tool' to make it easier for you to trial ideas in your farm, and help you analyse yield map data to determine the results of your patch test. The software is being developed, and a prototype version should be available on the [Farm-PEP website](#) by harvest 2023.

We want to make sure the final product is useful and meet the needs of farmers and advisors, so we would love to get your feedback! If you are interested in having your say and helping us design these 'Farm Trial Tools', you can join our autumn-winter workshops; in these online, hour-long events we will discuss your requirements and share early prototypes of the software for you to comment on. Join our list by contacting Susie.roques@adas.co.uk.