

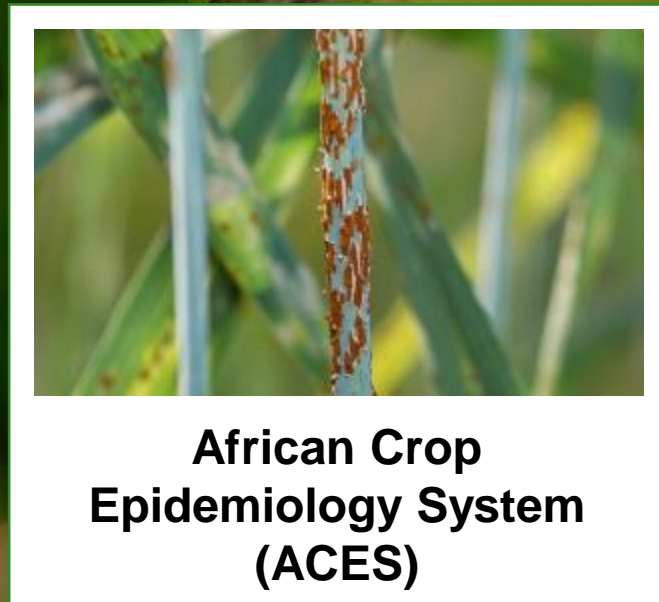


# CABI in 2023

We help farmers grow more and lose less of what they produce, combating threats to agriculture and the environment from pests and diseases and improving access to scientific knowledge



# International Development



# CABI Open Resources



Our CABI Open Access programme makes key tools and research freely available, in order to contribute to our mission of solving problems in agriculture and the environment.



## Action on Invasives

CABI's global Action on Invasives programme aims to protect and improve the livelihoods of rural communities. It provides an environmentally sustainable, regional, and cross-sectoral approach to managing invasive species.



## agriRxiv

An open access preprint service giving researchers the opportunity to share scientific discoveries and explore new research to inform agricultural science, policies and practice.



## BioProtection Portal

A free, web-based tool that enables users to discover information about registered biocontrol and biopesticide products around the world.



## Books

High quality research, freely available to read and download. Our open access titles cover agriculture, plant sciences and public health.



# CABI Open Resources



## CABI Agriculture and Bioscience Journal

A broad-scope, open access journal publishing original research and data across agriculture and the biosciences. It includes plant science, climate change, soil science and social sciences.



## CABI One Health

A transdisciplinary open access journal focusing on the interconnections between humans, animals, plants, ecosystems, and their shared environment.



## Fall Armyworm Collaboration Portal

The portal provides a comprehensive and accessible common platform for FAW



## Plantwise Knowledge Bank

An open access gateway to plant health information and services – from diagnostic and management advice to maps of pest locations, and customized alerts on pest news.



## Invasive Species Compendium

Detailed coverage of invasive species threatening livelihoods and the environment worldwide.



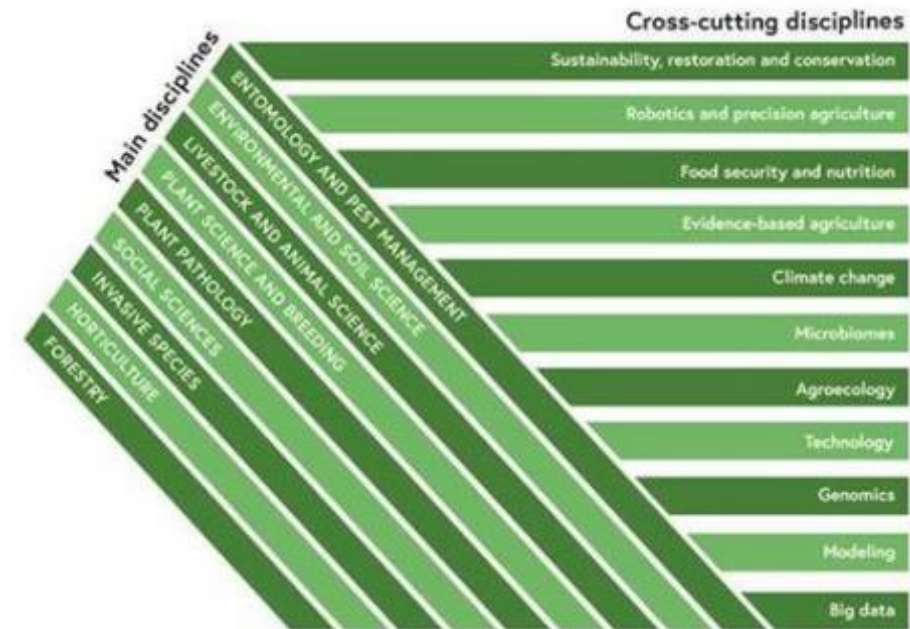
## Horizon Scanning Tool

The Horizon Scanning Tool supports decision making and helps you identify, categorize and prioritize invasive species threats.

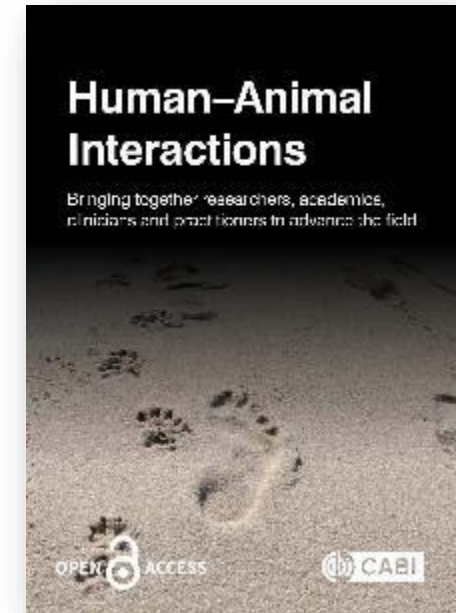
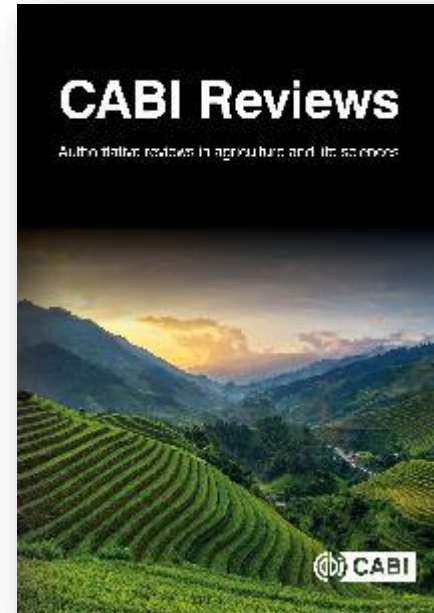
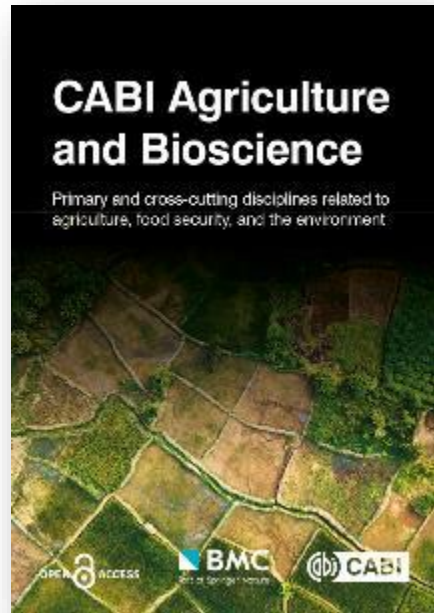
# CABI Agriculture & Bioscience

Impact factor  
**3.9**

- **Open access journal** publishing high quality, rigorously peer-reviewed interdisciplinary research focused on
  - global agriculture,
  - food security,
  - forestry,
  - environmental and
  - social sciences
- Encourages inter and cross-disciplinary research that addresses the core focus areas



# CABI Journals



# CABI Digital Library



Search across all of your subscribed content in one place



Powered by Atypon through their world leading Literatum platform



Fully mobile, responsive design



New user interface designed around the needs of our users



Tailor your automated content feeds



New and improved search and filter options



Built-in Search Engine Optimisation (SEO)



Bringing communities together to share knowledge



# CAB Abstracts

- ✓ Covers publications from 120+ countries in 50+ languages (including niche, independent journals), giving you the fullest global picture in the subject
- ✓ As well as selecting from thousands of core scientific journals, CAB Abstracts also offers extensive coverage of “grey” literature
- ✓ Comprehensive subject indexing with the CABI Thesaurus, making searching easier and providing more precise access to ALL relevant research



# Global Health

- ✓ Unparalleled access to the world's relevant public health research and practice
- ✓ Captures international literature not covered by other databases, providing a truly global perspective
- ✓ 54% of the journals contained in Global Health are not in PubMed, around 70% are not in Medline or Embase
- ✓ Covers all aspects of public health at both international and community level



# CABI Compendium

- ✓ Comprehensive, encyclopedic resources across animal health and production, aquaculture, crop protection, forestry and horticulture.
- ✓ Created in partnership with key organisations in each field, such as EPPO, FERA, FAO, PROSEA, USDA and World Bank

Features decision support tools including:

- ✓ **Pest Risk Analysis Tool**  
Helping you identify, assess and manage the risks of plant pest introductions in countries and ensure safe transportation of plant products
- ✓ **Horizon Scanning Tool**  
Helping you identify, categorize and prioritize invasive species threats



# CABI Full Text



**CABI Reviews** is an international reviews journal that complements the subject coverage of CAB Direct, providing analysis of emerging trends and overviews of important topics.



**CAB eBooks** offers over 900 titles across agriculture, environment, human sciences, plant health, leisure tourism, and veterinary and animal science. Available for purchase or subscription, in packages or pick and choose.



**Distribution Maps of Plant Pests**, created in association with the European and Mediterranean Plant Protection Organization (EPPO), are the authoritative source on the worldwide distribution of plant pests of economic or quarantine importance.



**Distribution Maps of Plant Diseases**, created in association with the European and Mediterranean Plant Protection Organization (EPPO), are the authoritative source on the worldwide distribution of plant diseases of economic or quarantine importance.



**Descriptions of Fungi and Bacteria** offers diagnostic descriptions, illustrations and information on over 2,000 fungal and bacterial taxa.

# CABI Academy

Partnering with world-leading universities, research organisations, and businesses – taking up-to-date knowledge and turning it into practical, action-based resources and learning activities.

The CABI Academy is driven by CABI's mission:

- To contribute to reaching the Sustainable Development Goals
- To share knowledge
- To work in partnership
- To focus on people
- To work for the long term
- To be objective and impartial



## Crop pest diagnosis

A comprehensive and practical introduction to diagnosing crop problems.



## Crop pest management

A comprehensive and practical introduction to managing crop problems.



# CABI Case Studies



***Animal Behaviour and Welfare Cases*** is a collection of real-life examples of animal behaviour and welfare in practice. An invaluable resource for students, researchers, and research-led and industry practitioners.



***One Health Cases*** is a curated collection of real-life examples of One Health in practice, stressing the interconnections between humans, animals, plants, ecosystems, and their shared environment in a truly transdisciplinary way.



***Tourism Cases*** is a collection of real-life examples of tourism in practice. Written by international practitioners and academics, they are designed to share expertise, experiences and real-life examples to support learning and development.



***Plant Health Cases*** is a growing collection of high quality, educational case studies written by experts from around the world. This resource will save lecturers time and effort in finding suitable cases and offers more options to support student engagement.

# CAB eBooks Collections

## Choice Annual Collection

Yearly collections are available from 2017 in concise packages of CABI's most recent content.

## Subject collections

Seven subject bundles help you focus your eBook library:

- Agriculture
- Animal and Veterinary
- Environmental Sciences
- Forestry
- Human, Food and Nutrition Sciences
- Leisure, Tourism and Hospitality
- Plant Sciences

## Choice Reference

CABI's key reference eBooks can now be individually purchased to build your eBook library and offer online access to essential Dictionaries, Encyclopedias and Taxonomic Keys.

## Your Choice Collection

Choose any titles from the entire Choice Collections list. Select exactly the eBooks you want for your bespoke collection.



# CABI Collections



Animal Science



Environmental Impact



Forest Science



Nutrition & Food Science



Leisure Tourism



VetMed Resource



CABI is an international intergovernmental organisation, and we gratefully acknowledge the core financial support from our member countries (and lead agencies) including:



Ministry of Agriculture and Rural Affairs, People's Republic of China

