



An Overview of the FarmED Resource

JONTY BRUNYEE

**Regenerative Farmer & Consultant - Conygree Farm
(Head of Sustainable Farming & Food Systems - FarmED)**

Bore Place - July 2023



The Centre for Farm and Food Education based at Honeydale Farm in the Cotswolds, UK.

**We aim to be at the heart of local, regional and global
agroecological transition**

A Community Interest Company

Providing learning spaces and events that inspire, educate and connect people to build sustainable farming and food systems that nourish people and regenerate the planet

FarmED – Key Features

Honeydale Farm (home of FarmED) is a 107 acre (43ha) demo farm with:

- Herbal leys
- No input heritage (population) wheat with living mulch
- Perennial wheat trial
- Oats/barley,
- Wild bird seed plots
- Cocktail mix cover crops
- Enhanced field margins
- Control plot – intensive continuous wheat
- Sainfoin and lucerne plots
- Species rich permanent pasture
- Mob grazed sheep
- Micro dairy (grass fed/calf at foot, milk processed on site)
- Beef steers
- No dig/dig market garden - CSA model (5 acre)
- Heritage orchard
- Apiary – traditional and tree hives
- Shelter belt planting
- Agroforestry – alley cropping
- Hedges and drystone walls
- Natural flood management scheme and ponds



A Living Text Book of Regenerative and Agroecological Farming and Growing













The FarmED Offer

Inspire	Educate	Connect
<p>Demonstrations</p> <p>Farm Walks</p> <p>Film Nights & Talks</p> <p>Feasts, Festivals & Celebrations</p> <p>Case Studies</p> <p>Podcasts & Videos</p>	<p>Knowledge Exchange</p> <p>Intro & Advanced Courses</p> <p>Skills Workshops</p> <p>Webinars</p> <p>School & University Engagement</p> <p>Mentoring & Consultancy</p>	<p>Gatherings</p> <p>Conferences</p> <p>Network Building</p> <p>Facilitation</p> <p>Venue Hire</p>

We cover soil health, gut health and everything in between!

The FarmED Audience

Everyone.....Local communities, schools, families, universities, researchers, farmers, growers, agronomists, new entrants, foodies, chefs, career changers, businesses, entrepreneurs, environmental groups and policy makers etc.



FarmED Data

Bird surveys

Soil surveys

Water quaility data

Some financial data



FarmED Data

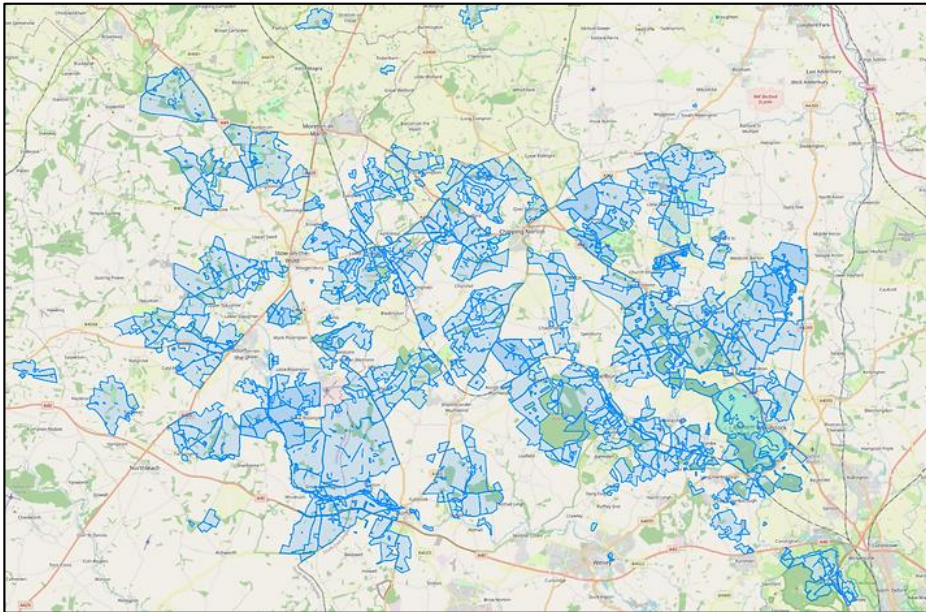
Plot	Land Use	Soil Organic Carbon (%)	Organic Carbon Stock (t/ha)	Active Carbon (mg/kg)	CO2 Soil Respiration (mg/kg)	Soil Organic Matter (%) 0 – 30cm	Soil Mineral Nitrogen (kg/ha)
5	Herbal Ley Year 4	2.4	86	753	105	4.1	19
7	Heritage Wheat Year 5	2.2	76	796	105	3.8	32
9	Conventional Wheat	2.1	77	735	89	3.6	55
10	Sainfoin	2.2	77	819	102	3.6	33
11	Tree Shelter Belt	2.4	82	762	132	4.1	22

FarmED Supported Research

- **Various undergraduate dissertations**
- **PhD research including...**
 - **Nitrous Oxide emission study from the herbal ley/arable rotation (Birmingham Uni - currently being in written up)**
 - **Mycorrhizal associations/colonisation rates (Oxford Uni - year 2 data being collected)**
- **The Centre for High Carbon Capture Cropping (CHCx3) is a four-year, 22-partner project, led by NIAB's Dr Lydia Smith**
 - **The research aims to help UK farmers and growers target Net Zero and build farming resilience through diversifying their arable and forage cropping. It will enable new revenue sources through a carbon marketplace and support enhanced value chains for industries such as textiles and construction**



THE NORTH EAST COTSWOLD
FARMER CLUSTER CIC



FarmED is the home of one of the biggest farmer clusters in the UK...a living lab of 42,000ha

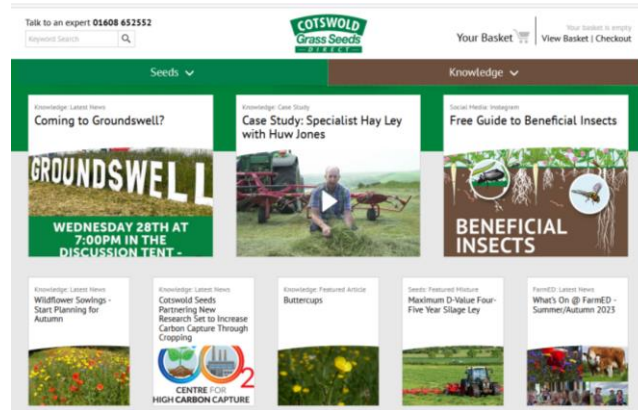
Landscape Recovery pilot with data/research outputs (with Leverhulme Centre for Nature Recovery/Oxford)

Other...

Podcasts and videos

<https://www.youtube.com/@RealFarmED>

Cotswolds Seeds (Parent Company)...lots of case studies and info...



Other...

Emergent Generation

- *A diverse network of young people (18 – 30) working together to build an agroecological food system and regenerative future.*
- *Events and meet ups*
- *Training and mentoring*
- *Encourage your students to engage?*
- *linktr.ee/emergentgeneration*
- *Big push in 2024*



Other...

The Agroecology Learning Collective (was The FED)

- *An ecosystem of educators, advisers, demo farms, learning centres, mentors etc.*
- *Steering Group - LWA, FarmED, Agricolology, Schumacher, Apricot, Black Mountain College etc.*
- [*hatty.richards@landworkersalliance.org.uk*](mailto:hatty.richards@landworkersalliance.org.uk)

FarmED Contacts

@RealFarmED www.farm-ed.co.uk Kate@farm-ed.co.uk

Jonty @conygreefarm.co.uk / 07886 305508