

Who are the Soil Association?

A charity, 77 years old, whose mission is to transform the way we eat, farm and care for the natural world.

Food and Farming & Healthy and Sustainable diets

Certification scheme – Organic and Forestry
Standards & Policy
Farming & Land Use Team

We work with all farmers (not just organic ones)



Farming and Land Use

We provide

- Resources – films, website content, printed material
- Advice and expertise on nature-friendly farming practices
- Networks – farmers, growers, researchers, academics
- Events - farm walks, demonstration events and agriculture shows



Low Input Farming Advice

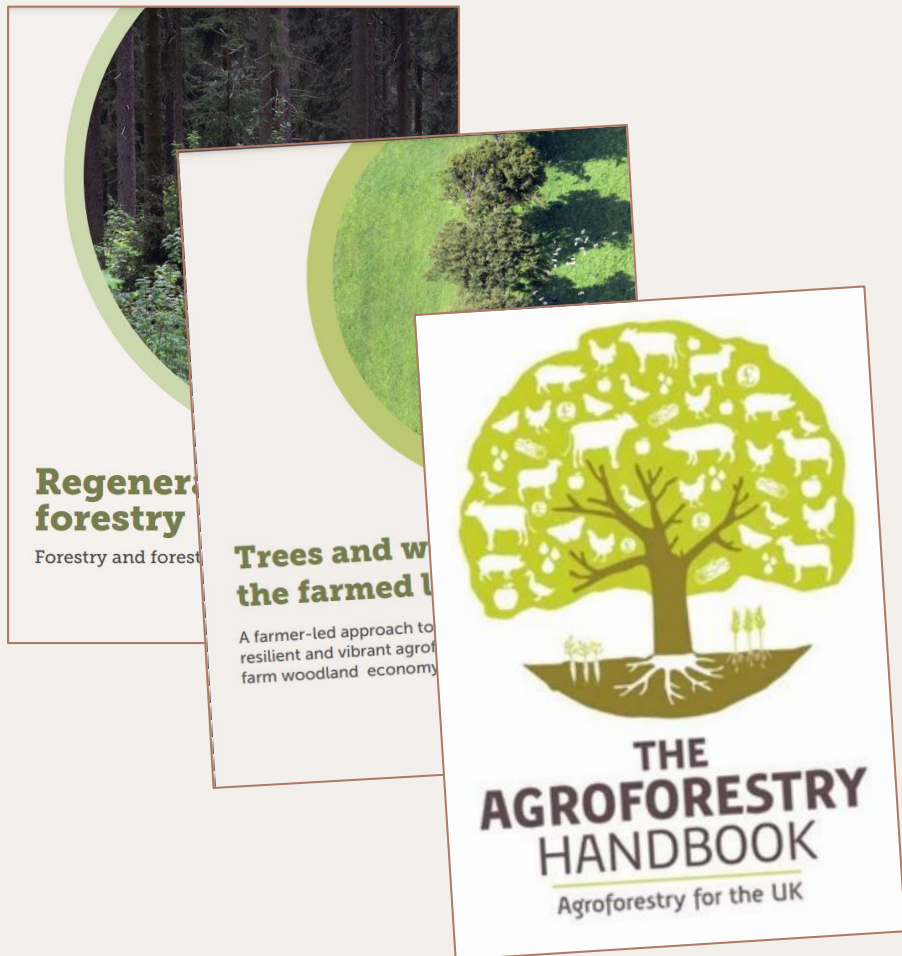
Covering key agroecological farming practices, ie herbal leys, agroforestry, soil health, IPM and more

Reports and guides, films, recorded webinars, blogs, news items



Agroforestry On Your Farm

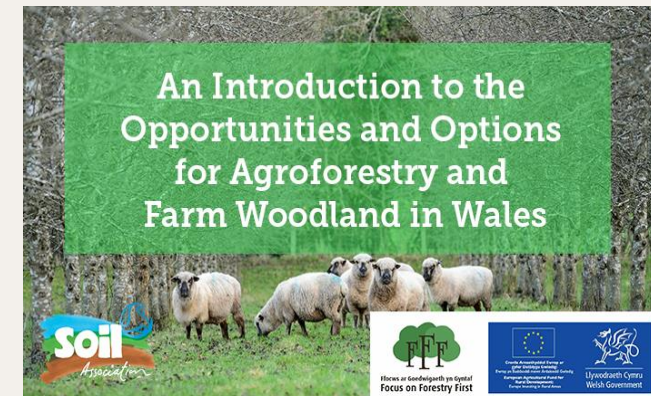
Reports and guides



Films



Online course



Major new event

— bursary for 100 student places





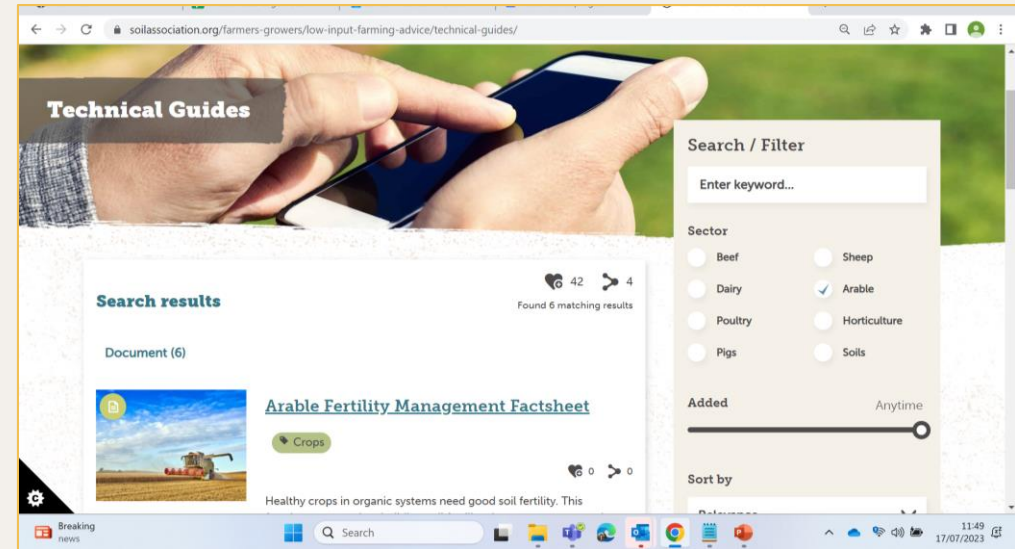
About Organic Farming

Organic principles

Why choose organic?

Conversion (including payments)

Technical guides



Horticulture

Technical guides



Slugs Factsheet

📄 Growing

👍 0 🔄 0

Slugs pose a significant problem to all growers in the British Isles due to our warm, wet climate. This factsheet summarises organic strategies for prevention and control.



Protected Cropping - Timings Factsheet

📄 Crops 📄 Growing

📄 Protected Cropping

👍 0 🔄 0

A table of some useful crops and their approximate periods of glasshouse production



Horticultural Rotations Factsheet

📄 Crops 📄 Growing

👍 0 🔄 0

A balanced rotation is the cornerstone of an organic system. This factsheet covers the principles of crop rotation including organics standards, green manures, as well as designing, planning and monitoring the rotation.

Experience in horticultural training



Innovative Farmers

Website with trial results, knowledge hub, info for farmers and researchers

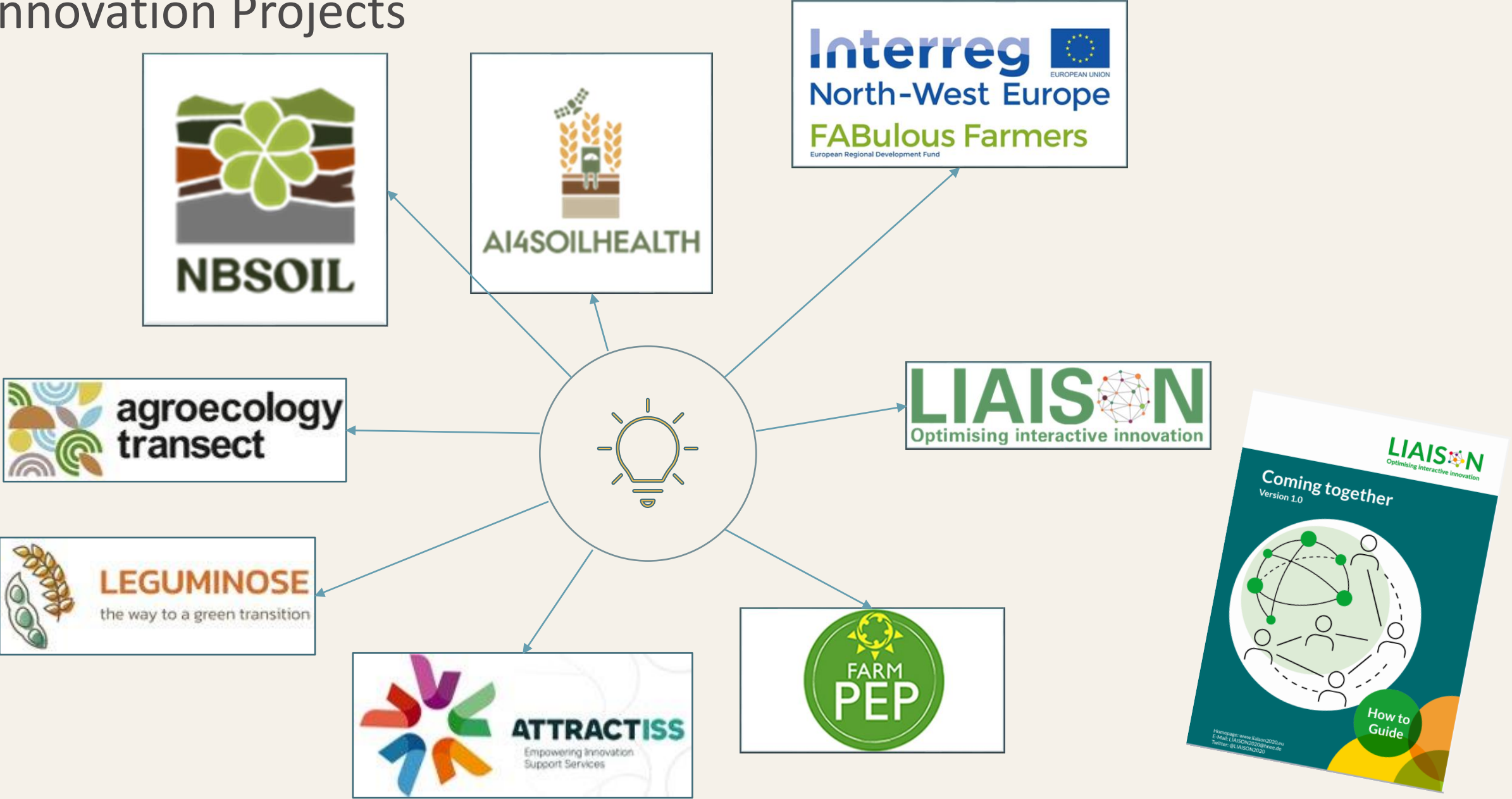
Field Lab Journal with trial reports



Films



Innovation Projects



Nature Based Solutions for Soil Management



Co-funded by
the European Union

Training and upskilling the next generation of soil advisors to implement soil health improvements 'on the ground' through Nature Based Solutions (NBS).

MOOC

Massive Open
Online Courses

2-year training
programme

SOIL ADVISORS

Farming, forestry,
public authorities,
policy and planning

UK FOCUS
Cover crops
and
Paludiculture

TOOLS & TECHNOLOGY

Citizen science and data
collection

AI for Soil Health

Linking soil biodiversity to ecosystem services - **using AI technology to accelerate the design, collection, interpretation, and dissemination of soil health information** - for climate resilient land management and food production, planning and policy, with field monitoring tested by farmers, foresters and land owners.



**Open access
for
innovation**

Soil 'digital twin'

PILOT SITES

12 pilot sites in 12 countries.
Differing climatic regions, soil types, land management and farming practices

UK FOCUS

Wales and
East of
England

**TOOLS &
TECHNOLOGY**

Mobile phone app,
remote sensors,
satellite imagery and
monitoring

Animal Health and Welfare

AssureWel
Welfare outcome assessment – industry adopted protocols and training

Alliance to Save Our Antibiotics
Reports, films and campaigns

AssureWel
Advancing Animal Welfare Assurance

Improving farm animal welfare through welfare outcome assessment

(Dairy) Cleanliness practice test

Select an answer; you will instantly receive feedback on the correct score.
Your results will not be recorded.

Points to remember:
Don't include staining
Don't include areas of dirt forward of the hindquarters (do include dirt on udders and hind legs)
The threshold is a 40cm area of dirt.

This test provides a small selection of more challenging examples to help you practice scoring Cleanliness. Pictures will be shown in a randomised order. Choose the most appropriate score to receive feedback immediately. You can use this as a practice run before sitting the Cleanliness test, or as a refresher. Your scores will not be recorded.

Question 1 1 of 4

Image Reference: 120b6a0f-6ea7-4d52-8426-8ae85c31704a

Choose a score for this cow

Clean

Dirty

Most of the dirt on this cow is staining rather than fresh dirt. None of the patches of dirt within the assessed area are big enough to merit a Score 2.

Guidance for Contract Catering companies on how to achieve a responsible antibiotic policy across your supply chain.

Antibiotics Policy Toolkit

ALLIANCE TO SAVE OUR ANTIBIOTICS

Alliance to Save Our Antibiotics

Soil Association Exchange

Our Mission

Every farmer given the data, support and financial rewards they need to farm in harmony with climate, nature, animals and humans.

13 | Private & Confidential | © 2022



Get access to the Exchange platform

STEP 1 Profile details STEP 2 Business details STEP 3 Farm setup

First name Last name

Mobile number GB mobile number

Email

New password [Show](#)

Already have an account? [Sign in now](#)

Make your farm more profitable and more sustainable

A digital platform to make capturing sustainability data easy and enjoyable

Kate Still : kstill@soilassociation.org

producer.support@soilassociation.org

Thank you!

